



**Kellett Road, Brixton, SW2**

3 bedroom flat - conversion for sale

**£749,500**

Leasehold

## Property Details

An exceptional three double bedroom split-level penthouse with a stunning South-facing roof terrace, arranged over the top two floors of a handsome Victorian conversion on Kellett Road. Bright, airy and full of character, the property has been lovingly maintained by the current vendor, with updates including a new kitchen, bathroom and carpeting. A staircase leads up to the impressive open-plan reception room, the only flat on the street boasting a full wall of floor-to-ceiling windows. Bathed in natural light from expansive skylights, this striking space frames rooftop views and offers a perfect setting for entertaining, dining, or relaxing in privacy. The sleek integrated kitchen features gloss cabinetry, wooden worktops, a Neff dishwasher and fridge/freezer, plus a Moroccan tiled splashback. French doors flow onto the superb South-facing roof terrace, generous in size with a pergola and multiple seating areas, ideal for al fresco living. Downstairs, three genuine double bedrooms include a particularly spacious principal, with a stylish family bathroom completing this rare and desirable home.

Council tax band D

EPC rating D (66)

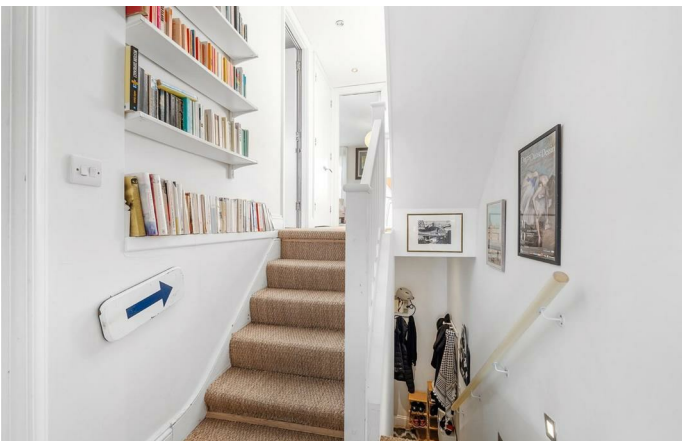
## Features

- Three double bedrooms
- South-facing roof terrace
- Victorian conversion
- Far-reaching views
- Split-level top floor apartment
- Fantastically bright and airy
- Over 900 square feet
- Central Brixton moments from your door
- Victoria line a five-minute stroll
- Brockwell Park a ten-minute walk, Herne Hill in twelve









Kellett Road, Brixton, SW2

## Kellett Road, SW2

### 3 Bedroom Flat

APPROXIMATE GROSS INTERNAL AREA WITH EAVES: **944 SQ FT / 87.7 SQ M**

APPROXIMATE GROSS INTERNAL AREA WITHOUT EAVES: **910 SQ FT / 84.5 SQ M**



While we try our very best, floor plans are produced as a guide only and we take no responsibility for the precise accuracy with which any property is represented.



Kellett Road, Brixton, SW2

